

ADD T

Francesco Rota | 2016





ADD T

Francesco Rota | 2016

Gathering around a table, an action combined with the most important place for a meeting. But only “large” tables know how to be really accommodating. And to be ideal for everyone, the design is minimalist with the most extreme simplicity to make it highly elegant. It is almost like the framework of a leaf that sends sap to every single part. The veins are its die-cast aluminium legs that create a single corner solution or continue with the addition of frames. It is called ADD T, the protagonist of the ADD seating system in any natural and contemporary setting.



ADD T

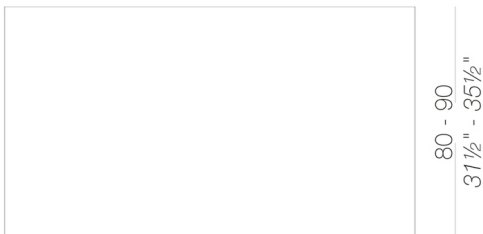
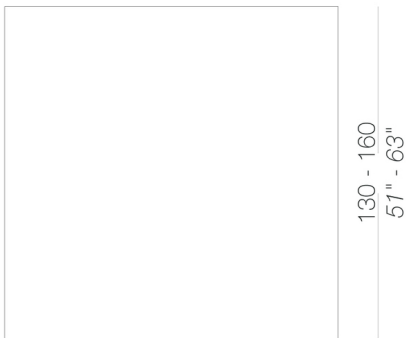
Francesco Rota | 2016

Modular system of tables with frame in aluminium extrusion and die-cast corner and linking legs which allow several configurations. Tops available in HPL Fenix® 10 mm.

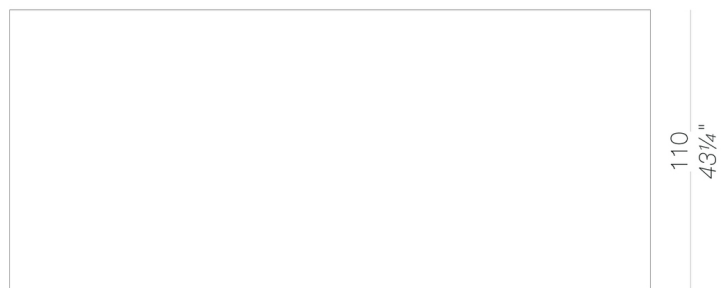
legs



tops



160 - 180 - 200
63" - 71" - 78³/₄"



250 - 300
98¹/₂" - 118"

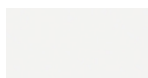
ADD T

Francesco Rota | 2016

frame



powder coating
black
1 Colors

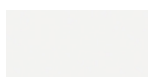


powder coating
white
1 Colors

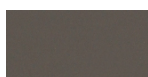
top



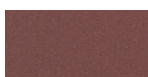
HPL 10 mm
black HPL fenix
1 Colors



HPL 10 mm
white HPL fenix
1 Colors



HPL 10 mm
HPL fenix grigio
Londra
1 Colors



HPL 10 mm
HPL fenix rosso
Jaipur
1 Colors

consult the folder of materials for the range of colors

use and maintenance instructions

Plastic materials, even if intended for outdoor use, may still be attacked over time by particular atmospheric pollutants (e.g. acid rain, high concentration of PM10, nitrogen oxides, hydrocarbons, etc.). Any changes in the surface and in colours may therefore occur under particular conditions of exposure and cannot be considered grounds for any claims.

Do not use detergents containing bleach, hydrochloric acid or products containing chloride on any metal parts. Salt, limescale or acid (from coffee, wine, orange juice, tomato juice, lemon, etc.) may discolour stainless steel parts if they are not promptly cleaned. Products or parts made of stainless steel used near the sea or in interior fittings of swimming pools require more frequent cleaning to remove chloride deposits and prevent corrosion and chemical attack of the external surface. Stains on stainless steel surfaces must be promptly cleaned. If left for a long time they can become permanent.

To prolong the life of the product, clean the surfaces regularly, dry them with a clean cloth and remove any stagnant water, especially if exposed in locations with a high level of humidity or a marine climate.

When not in use, we recommend storing in sheltered places and covering with waterproof protection. In this case, it is advisable to remove the cover and ventilate the product frequently and regularly to avoid the onset of any mould or stains due to damp.

THE WARRANTY WILL NOT COVER DEFECTS OR IMPERFECTIONS RESULTING FROM THE PASSAGE OF TIME OR TO WEAR AND TEAR DUE TO THE NORMAL USE OF THE PRODUCT.