

ARIA

design Romano Marcato
2013



Light, both in its weightlessness and aerial shape - iconic, because it is the essential seat for outdoors: a simple metal frame with square section wrapped with rope, forming the seat and the back allowing air to pass through. Overall a natural contemporary style.



ARIA



ARIA



ARIA



ARIA



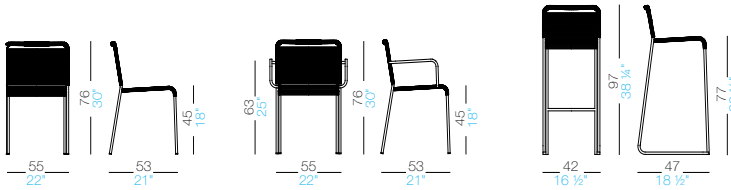
ARIA



design Romano Marcato

2013

Stackable chair with or without arms, in stainless steel Aisi 316L powder coated white, black or sandblasted. Seat and back are handmade with cord in double polyester twisted thread with a cotton finishing. The stool is available in the same finish.



frame



stainless steel 316L
sandblasted



powder coated:
black



powder coated:
white



stainless steel
304
sandblasted



stainless steel 304
powder coated:
black

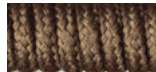


stainless steel 304
powder coated:
white

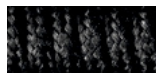
seat / back



cord
lino



cord
tabacco



cord
nero



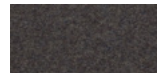
fabric:
Hallingdal 65
18 colors



fabric:
Remix 2
12 colors



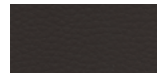
fabric:
Steelcut
10 colors



fabric:
Divina MD
9 colors



fabric:
Cava 3
14 colors



eco-leather
Accademia
7 colors



eco-leather
Ikon
6 colors



soft-leather
7 colors

consult the portfolio for the range of colors, fabrics, soft-leather, eco-leather.

use and maintenance instructions

Clean all parts in wood, leather, fabric and metal with a damp cloth or a diluted neutral cleaner. Do not use cleaners with alcohol, bleach, solvent or abrasive products. Any liquid spill on the product must be wiped up immediately. When lifting or moving the product, hold it on the structure and not under the seat. The product should not be subjected to unbalanced weights, as it is designed for a proper rest on the foothold (on four legs or on the base). Our company relieves from any responsibility in case of damage caused to fragile floors. Avoid any improper use of the product: do not step on the product, on the footrest or on the armrests. Avoid any movements that could compromise the proper functionality of the product or the safety of the users. Wood and leather, being natural materials, could be easily damaged. Small impurities or imperfections are within quality standard range. Do not expose the product to weather conditions or atmospheric agents, nor to heat sources over 45°C. Also products for outdoor use could be afflicted by atmospheric agents. The product could undergo possible exterior changes due to particular exposure to heat, humidity and saltiness. An appropriate and frequent maintenance and cleaning of the product enhances its durability. The product could change colour and shade, if exposed to direct sunlight. Maintenance has to be carried out by experienced staff. Dispose of the package only after assembling the product, in order to avoid the loss of ironmongery and components. Once the product has been dismantled, the product itself or its components must be given to the public garbage disposal system, according to the legislation in force.